



ADAY G R U P
LIGHT STEEL CONSTRUCTION





www.adaygrup.com.tr





20 years of journey in the construction industry
full of success.



ADAY GRUP INC.

Our company started its activities in 2001 by carrying out assembly-disassembly and mobilization projects of prefabricated construction sites and living areas both in Turkey and abroad. ADAY GRUP INC. have made studies on prefabricated buildings, light and heavy steel structures.

Especially in overseas projects, our company has become a serious solution partner for mobilization. As of 2011, ADAY GRUP INC. has invested in Light Steel Construction field with its high risk of earthquake and has started to provide services with its expert staff. Our company, which closely follows technological developments, has expanded its machinery park and increased its production capacity, has become a leader in light steel structures that are rapidly spreading in our country.

Our company which responds to the needs of wide-span industrial construction, school, hospital, social housing, multi-storey residences, villas and other light steel construction needs, continues to build safe, practical and economic structures by contributing to the development of the sector within the country.



OUR MISSION

To ensure the widespread use of light steel structures, to improve their use and thus to add value to our country.

WHAT WE DO



Building Elements **Production**

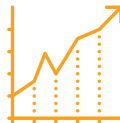
Modern and durable smart housing projects are our business!

Aday Group Inc. is the solution partner of more than 200 prefabricated and Light Steel Construction companies operating in the sector.



Modern Housing **Solutions**

Our company has proven itself in many different types of construction and it from the design stage to the turnkey process up to your side.



Mobilization **Solutions**

Our company is also experienced in container production and construction site installation. It has gained a prestigious place in the sector in short time with the important projects it has signed both in Turkey and abroad.



STEEL CONSTRUCTION **SYSTEM DEFINITION**

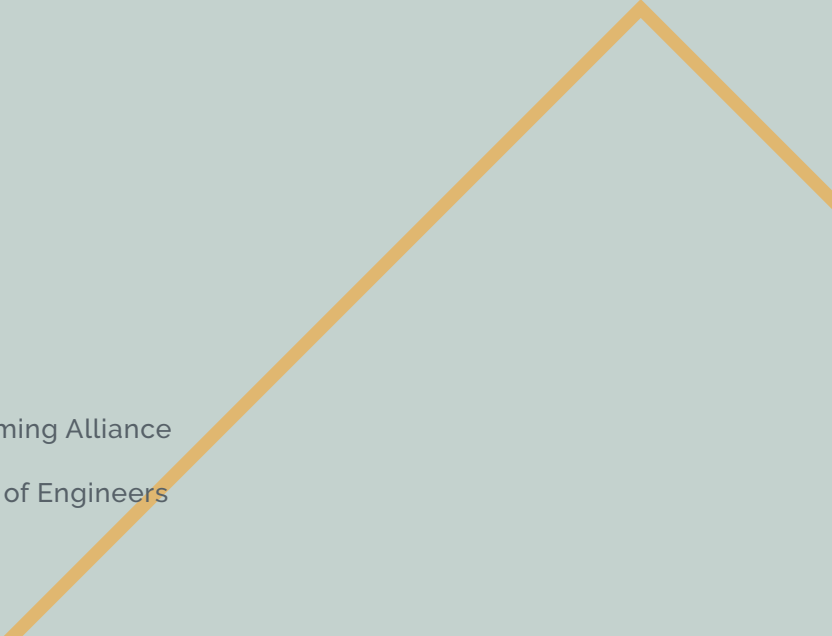
Galvanized light steel sheet, which varies in thicknesses of 0.8mm -1.6mm, is formed by roll-form machines (cold rolling) and formed into profiles suitable for static calculations. These profiles are connected with screws and rivet system without welding, and the carcass system of the structure is formed. Carcass walls, floor and roof structure containing the carcass system, making the appropriate coating is fully rigid.

CONCRETE FOUNDATION

30 cm in height from the ground level, equipped with a simple basic joist system. Carrier walls are anchored to concrete beams. The remaining spaces are filled by blocking. The flooring is formed by pouring the steel with the reinforcing mesh.

BEARING SYSTEM

The static project of the structural system is prepared according to the following standards and rules:

- AISI Specification for the design of Cold-Formed Steel Structural Members
 - TS-498 "Account Values of the Loads to be Taken in the Structural Sizing of Building Elements"
 - ASCE-7 "Minimum Design Loads for Structures"
 - Regulation on Structures in Disaster Areas
 - International Building Code 2003
 - International Residential Code 2003
 - TS-648 Steel Structure Calculation and Construction Rules
 - Galvanized Steel Sheet Standards
 - Prescriptive Method for Residential Cold-Formed Steel Framing, North American Steel-Framing Alliance
 - Design of Cold-Formed Loadbearing Steel Systems: Technical Instructions, US Army Corps of Engineers
- 

CONSTRUCTION FEATURES

Ext. Walls

- 140 mm Roll-From machine drawn C profile steel carcass system
- Rock Wool Insulation inside C profile frame
- Betopan / Boardex / OSB / Tassoonite / Wood Veneer etc. products
- Depending on the project, preferably Rock Wool Sheathing – 5cm

Int. Walls

- 90 mm Roll-From machine drawn C profile steel carcass system
- 60 mm Rock Wool Insulation inside C profile frame
- Betopan / Boardex / OSB / Plaster board Coating
- Gypsum-plastering process
- Paint or Wallpaper application in accordance with the project

Roof Covering

- OSB application on steel roof carcass panels
- Membrane
- Shingle / Metal Tile / Stone Tile / Sandwich Panel

Ceiling Covering

- Glass Wool Insulation into Steel Ceiling Panels
- Ceiling Plaster board application
- Paint or 60 x 60 Plaster application

All material options such as coating, insulation and accessories can be changed according to project and customer preferences

BENEFITS

Compared to other building types, the most important advantage of Light Steel Construction is that it is homogenous, isotropic, durable and has a minimal human initiative.

Factory production and field assemblies can be completed within a very short period without fail and without damage. It offers a wide range of options in design and material preferences and also offers clear usage areas with concealed column beam system.

According to the reinforced concrete structures, the wall thicknesses are in certain standards, saving in the exterior cladding and gaining 7-10% space in the interior. It is Lighter than other building systems, and this feature reduces the impact on the building during the earthquake and ensures a reliable life against the earthquake





AFFORDABLE

Pre-fabricated, fabricated bearing elements provide high quality at low price and shorten construction time. Steel is the material that has the highest ratio of the weight of the carrying capacity. Thanks to the high bearing capacity of the steel, steel construction elements are produced in smaller cross-sections and sizes, lighter and excellent qualities. Price balance and short construction times allow people to settle sooner, allowing them to achieve less rent, interest and cost advantages.



EARTHQUAKE RESISTANT

Steel is the most durable construction material against earthquake due to its high strength, flexibility and light weight. Its light weight allows it to resist the bumps. The only factor that will reduce the earthquake force is the alleviation of the structure. Because the larger the mass of the structure, the greater the force the earthquake will exert on it. Steel houses are 5 times lighter than reinforced concrete structures. This means that the earthquake load to the building is 5 times less.



HIGH QUALITY

The quality of the steel, which is a completely industrial product that internationally defined specifications is produced and documented at every stage of production. The producer or user cannot interfere with the physical properties of the material. Theoretical values also apply in practice. Since it is not hidden inside the concrete, it ensures that the compliance with the project and standards can be monitored at all times.

Why you should choose Steel ?

Steel Structures

- The quality of steel construction elements is under constant supervision. It is produced in accordance with the standards in the factory conditions.
- Because it is a homogeneous and isotropic material, it shows the expected behavior and the margin of error in static calculations is very low.
- Due to the smaller sections, the usage area of the structure increases.
- Since it has the possibility to pass large openings without tie-bar with smaller sections, it provides alternatives to create large space and desired design with low cost.
- Much lighter and strong structures can be built. This reduces the basic cost and provides an important advantage against earthquake loads.
- Can be constructed in all weather conditions and very quickly. This ensures low labor costs and the ability to respond to needs in a short time.
- Qualified workmanship is required. This minimizes compliance errors.
- The material can be easily controlled at all times.
- The structurally damaged component can be easily replaced. This process is fast, easy and low cost.
- Steel structure can be easily reinforced when required; it is possible to disassemble and reassemble to another area if desired.
- Steel construction elements can work with full load capacity when assembly is completed.

Concrete Structures

- Due to application errors, the quality of the reinforced concrete structure may decrease in dangerous dimensions.
- It is not as homogeneous and isotropic as steel and the margin of error is higher due to the assumptions in static calculations. Therefore costs rise.
- Does not require qualified workmanship. Therefore, significant application errors may occur.
- The control of the reinforced concrete structure after pouring concrete is very expensive and inconvenient.
- Strengthening the structural element damaged by any reason is a difficult and costly process. This process brings with it architectural problems.
- In wide openings, cross-sections are larger and costs are higher. Alternatives are more limited than steel structures in creating large space and desired design.
- Foundation costs are also high due to the large weight. For the same reason, it is disadvantageous because of its foundation-ground interaction against earthquake loads.
- The construction period is long and is not suitable for all weather conditions. Therefore, it is long term and more costly.



ENVIRONMENTALLY FRIENDLY

100% Recyclable, Durable and Modern

Light Steel Structures are 100% recyclable, non-gaseous, energy, resources and manpower saver system that compatible with the ecological balance. It does not oscillate the harmful gas like concrete system and no hazardous waste to human health after the construction. Considering these factors, Steel structures stand out as the most suitable building system for the environment and human health.



PREFABRICATED CONSTRUCTION

ADAY Group offers fast, economical and error-free solutions for professional firms by producing light steel construction elements such as roof trusses, beams, conveyor columns, stairs, roof and ceiling panels, wall panels.

- Prefabricated Construction Roof Masonry
- Production Prefabricated Construction Roofing
- Production Prefabricated Construction H Profile
- Prefabricated Construction Bonding Panel
- Production Prefabricated Construction C and U Profile

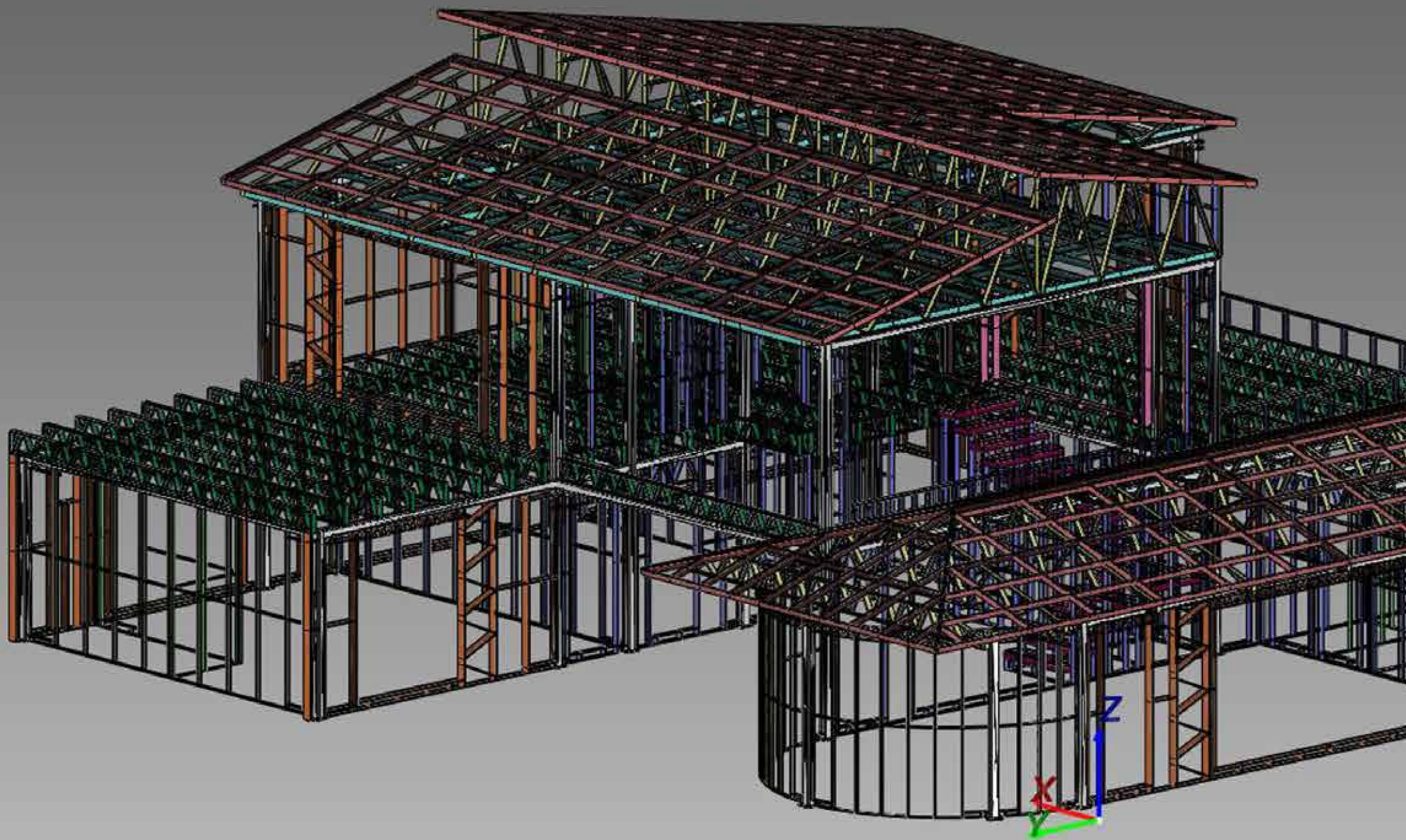
CONTAINER PRODUCTION

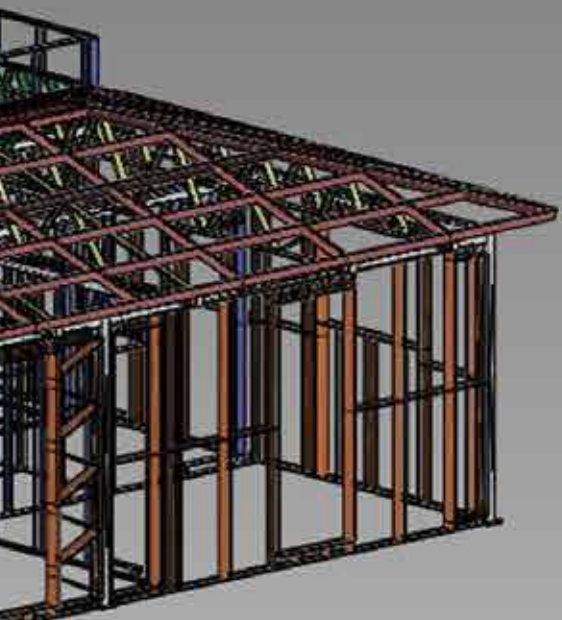
Our company produces a wide range of containers from standard type to various sizes container house.

Our products are manufactured as welded and disassembled. Aday Grup INC. does not compromise on quality from raw material standards to fine workmanship and provides project design services for special projects and camp areas.

Our company is very experienced in the construction site installation and disassembly. It has gained a respectable place in the sector in short time with the projects it has signed both in Turkey and abroad.







TYPES OF LIGHT GAUGE STEEL CONSTRUCTION

01 HOUSES

Affordable cabins, houses, or 8-storey buildings.

02 INDUSTRIAL BUILDINGS

Industrial construction solutions with 6 meters height and 10 meters column spacing without the need for heavy steel support.

03 COMMERCIAL BUILDINGS

Investor-friendly, the fastest and most economical solutions for the commercial process to start as soon as possible.

04 PUBLIC BUILDINGS

Permanent and durable facilities and service buildings for official institutions.

Houses

Our company manufacture modern buildings with light steel construction which is economical, fast, earthquake resistant up to 8 times construction type.



Economic Buildings

- Hobby Houses
- Farmhouses
- Outbuildings

Residential

- Single house
- Villas
- Multi-story Apartments



Industrial Buildings

The lightweight steel construction system allows for the construction of an industrial structure with a height of 6 meters and a column opening of 15 meters without the need for heavy steel support. Because of the low load per square meter of the buildings, they decrease the basic concrete costs; it can be constructed using high speed and less labor force and has a more suitable structure than its alternatives. It also provides serious economic gains in general by the direct application of coating materials. Our company provides services including architectural design, static calculation, production, field installation and turnkey process of industrial buildings.

- Factories
- Warehouses
- Workshops
- Garages
- Agriculture and Livestock Buildings



Commercial Buildings

With the Light Steel Construction system, commercial building needs can be produced in the most economical and fast way. It is very important to meet the needs of commercial buildings in the fastest, most economical and formal way. Thus the investor can receive the structure in a very short period and the commercial process can start as soon as possible. In this sense, it provides economic input to the investor.

- Office Buildings
- Shops
- In-Plant Office Building
- Hotels
- Private Hospitals and Health Centers
- Shopping Mall
- VIP Site Buildings
- Guest Houses
- Additional Floors Over Concrete Buildings



Public Buildings

In recent years, Light Steel Construction structures have been widely used in the construction of public service buildings. Due to the fact that it can be presented to the fast and error-free service, it is in the permanent housing class and the durability period is high, official institutions prefer the light steel construction system in many service buildings. Our company provides the professional companies that get government agencies or municipal companies with light steel carcass production, field assembly and turn-key construction services.

- Schools
- Hospitals and Hospital Outbuilding of
- Family Health Centers
- Office Of Buildings
- Service Buildings
- Gyms
- Additional Municipal Buildings
- Taxis, minibuses and Bus Stations
- Recreational facilities
- Social Buildings



SELECTED PROJECTS

You can see all our projects in detail on our website www.adaygrup.com.tr







Uzungöl Haros Suit Hotel
TRABZON



Göktürk Civil Aviation School
TEKİRDAĞ



Student Residence
Turkish Republic of Northern Cyprus



Bar Association
ERZURUM



Metropolitan Municipality
Department of Urban Aesthetics
ANKARA



Hippodrome Project
ANKARA



Karacabey Erbil Schools
BURSA



Eyüp Apartment Project
İSTANBUL



Apartment Project in Londra
United Kingdom



Pursaklar Belediyesi Kedi Evi
ANKARA



Eski Foça Villa Project
İZMİR



Bornova Villa Project
İZMİR



Lal Çelik Yamaç Housing Estate
ÇANAKKALE



Bala Luxury Cottages
ANKARA



Gölbaşı Villa Project
ANKARA



Villa Project
ANTALYA



Villa Project
KAHRAMANMARAŞ



Ayvalık Villa Project
BALIKESİR



Villa Project
MUĞLA



Urla Villa Projesi
İZMİR



In-Plant Office Project
İSTANBUL



Fisher Shelter
SAMSUN



City Gates Project
KARABÜK



İliç Mobilization
ERZİNCAN



Bala Livestock Market Project
ANKARA



Bakü TEKFEN Mobilization
AZERBAIJAN



Nizip Vehicle Inspection Station
GAZIANTEP



Dubai Mobilization
UNITED ARAB EMIRATES

OUR REFERENCES





Worldwide Right on time Project Delivery

With our global business network, we offer timely project delivery and 99% customer satisfaction throughout the world.

You can get a quote by contacting us at any time or visit our factory which has advanced technology machine network and experienced employees.



© 2019 Aday Grup Inc. All Rights Reserved.



ADAY G R U P
L I G H T S T E E L C O N S T R U C T I O N

Bayraktar Caddesi No: 13 / A Saray, Kahramankazan / ANKARA

Tel: +90312 385 9030

aday@adaygrup.com.tr

www.adaygrup.com.tr